

Banana Bunchy Top Virus is Killing Bananas in Pukalani and Makawao!

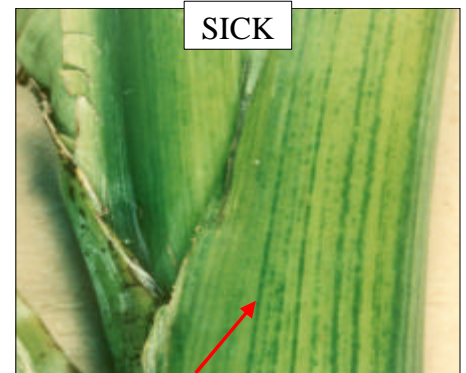
Call 873-3555 for help identifying sick plants.

The disease will stunt the growth of banana plants and eventually cause them to stop producing fruit.
There is no cure for this disease.

Have you looked at your banana plants lately?



Sick plants look stunted, bunched up, and yellow.



Sick plants have dark green streaks near the middle of leaves and where leaves attach to the plant.



Healthy plants are wide open, spread out, and green.



Healthy plants are clear near the middle of leaves and where leaves attach to the plant.

- **If you think you have seen sick plants or would like assistance identifying sick plants call the Hawaii Department of Agriculture (HDOA): 873-3555**
- **Help stop the spread and contain the virus by:**
 - Not moving banana plants out of Pukalani or Makawao. They may already have the disease.
 - Planting healthy banana keiki from non-infected areas.

For more information contact: UH-CTAHR www.ctahr.hawaii.edu or the Banana Action Group www2.hawaii.edu/~banana