



Black Dump Fly

Michael W. DuPont¹ and Linda Burnham Larish²

¹CTAHR Department of Human Nutrition, Food and Animal Sciences, ²Hawaii Department of Health

***Hydrotaea aenescens* Wiedemann**

Origin

First collected by Grimshaw on Lanai, December 1893,
now found on all the major Hawaiian islands.

Public health concern

Can be a nuisance to the public in large numbers.

Hosts

Larva feeds primarily on chicken and swine manure,
dead animals, and rotting meat.

Poultry concern

Larvae of the black dump fly are considered to be ben-
eficial because they prey on house fly larvae.

Description

Medium size, glossy black fly $\frac{3}{16}$ – $\frac{3}{8}$ inches long.
Adults prefer dark locations and stay close to the ground.

Life cycle

Growth stages: egg, larva, pupa, adult.
From egg to adult takes approximately 14 days.
Females lay about 170 eggs over a 7–10 day period.

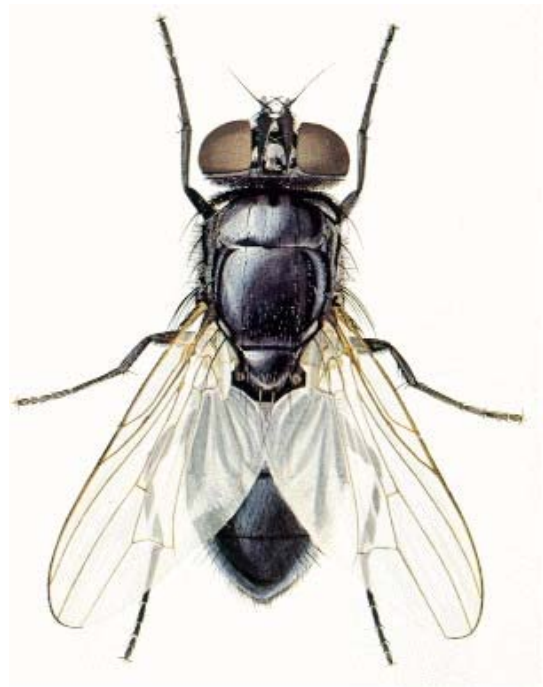
Control

Poultry operations need to keep good manure manage-
ment records if using the black dump fly as a biologi-
cal control for house flies.

When manure is removed, keep a residue of old, dry
manure to help absorb fresh droppings and preserve
fly predators.

Surface-spray with an insecticide when adult flies are
overabundant.

Consult your pesticide supplier for recommended prod-
ucts, and always follow label directions.



References

- Hardy, D. Elmo. 1960. Insects of Hawaii, v. 14 Diptera: Cyclorhapha IV. Univ. Hawaii Press, Honolulu. pp. 54–56.
- Hogsette, J. A., and R. D. Jacobs. The black dump fly: a larval pred-
ator of house flies. Univ. Florida Cooperative Extension. Photo
above downloaded May, 2003 from <http://edis.ifas.ufl.edu/BODY_PS021>.