

Major Papaya Diseases in Hawai'i

Anthracnose



Symptoms



Characteristic circular marks on fruit

Black Spot



Symptoms

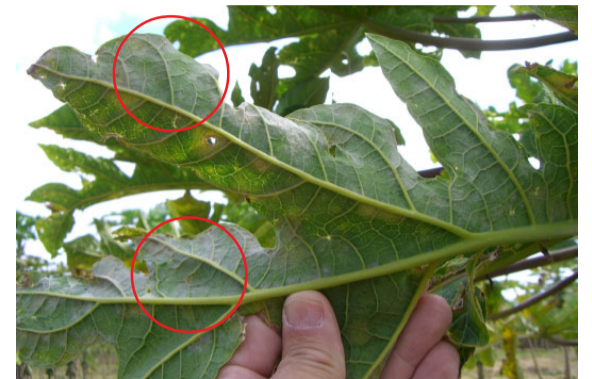
Spotting starts on underside of leaf



Spots on fruit lead to rejection



Powdery Mildew



Powdery growth on underside of leaf

Symptoms

Heavy powdery mildew causes premature leaf drop, which lowers fruit sugar



High powdery mildew pressure can affect young leaves

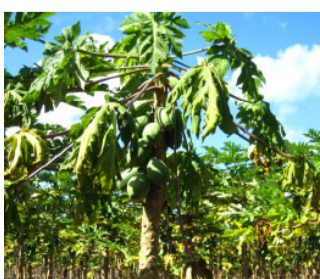


Phytophthora

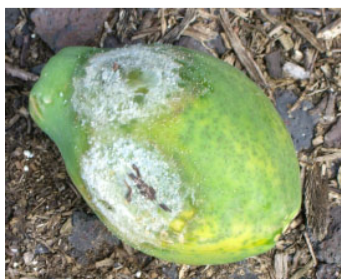
Stem canker in the fruit column



Symptoms



Phytophthora causes trees to wilt



Infected fruit has fuzzy white fungus growth



Topped trees rot at the root crown

CONTROL METHODS

Cultural Control

Sanitation: remove inoculum (contaminated tissue) from field when disease incidence is low, especially for Phytophthora

Chemical Control

Check State of Hawai'i licensed options at: <http://state.ceris.purdue.edu/doc/hi/statehi.html>

Biological Control



Beneficial fungus (white color) that attacks and parasitizes black spot fungus

Poster produced by ¹Sabina F. Swift, ²Lynne N. Constantinides, and ³John J. McHugh, Jr.

¹University of Hawai'i at Mānoa, College of Tropical Agriculture and Human Resources
Department of Plant and Environmental Protection Sciences

²Crop Care Hawaii, LLC, Honolulu

Funding provided by: CSREES, RMA, Hawaii Farm Bureau Federation, and the Hawai'i Department of Agriculture

Photo credits: Crop Care Hawaii, LLC