

Insect, Mite, and Snail Pests of Papaya in Hawai'i

Stevens leafhopper



ACTUAL SIZE

Symptoms



New shoots are bleached



New leaves are bright yellow

Thrips



ACTUAL SIZE

Symptoms



New leaves are ragged



New shoots are damaged

Twospotted spider mite



ACTUAL SIZE

Symptoms



Leaf undersides are damaged



Young plants can be severely damaged

Papaya mealybug



ACTUAL SIZE

Symptoms

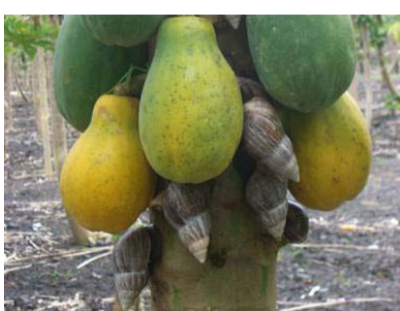


Can be seen on fruits



Concentrate on leaf undersides

African snail



Symptoms



Feed on new shoots



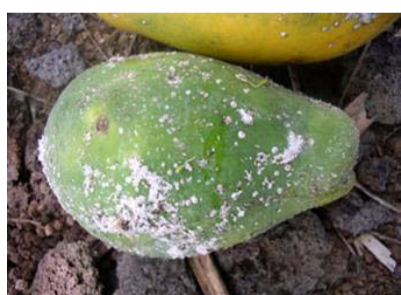
Damage young fruits

White peach scale



ACTUAL SIZE

Symptoms



Can be seen on fruits



Can heavily infest papaya trunks

CONTROL METHODS

Cultural Control

- Sanitation (for control of African snail)
- Weed control (for control of white peach scale)

Chemical Control

Check State of Hawai'i licensed options at:
<http://state.ceris.purdue.edu/doc/hi/statehi.html>

Biological Control



Aphid parasite



Predator mite



Green lacewing



Spider mite destroyer ladybug



Scale predator ladybugs

Poster produced by ¹Sabina F. Swift, ²Lynne N. Constantinides, and ³John J. McHugh, Jr.

¹University of Hawai'i at Mānoa, Department of Plant and Environmental Protection Sciences

²Crop Care Hawaii, LLC, Honolulu

Funding provided by: CSREES, USDA, RMA, Hawaii Farm Bureau Federation, and the Hawai'i Department of Agriculture

Photo credits: Commonwealth Scientific and Industrial Research Organization, CSIRO (thrips); University of Florida (mite); Crop Care Hawaii, LLC; Hawai'i Department of Agriculture (mealybug).