

Date	# of Circuits	Distance per Circuit	Total Distance

# Benjamin Parker Elementary

## Head Start Walk a Mile Map

This material was produced by University of Hawaii's Cooperative Extension Service's (UH-CES) Nutrition Education for Wellness Program (NEW) and its Supplemental Nutrition Assistance Program - Education (SNAP-Ed) with funds from United States Department of Agriculture's Supplemental Nutrition Assistance Program (formerly known as Food Stamps Program).

SNAP was formerly known as Food Stamps Program.

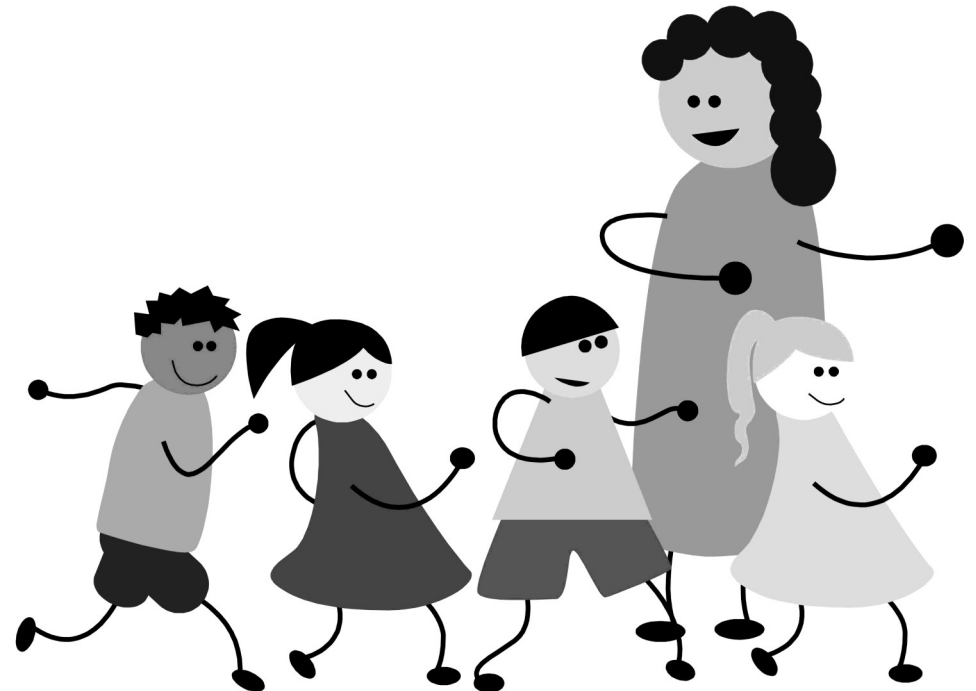
The SNAP and EFNEP Programs provide nutrition assistance to people with low income. It can help you buy nutritious foods for a better diet. To find out more, contact the State of Hawaii, Department of Human Services, Benefit Employment Support Services Division (BESSD), SNAP at (808) 643-1643 or log onto the Web at:

<http://humanservices.hawaii.gov/bessd/snap>

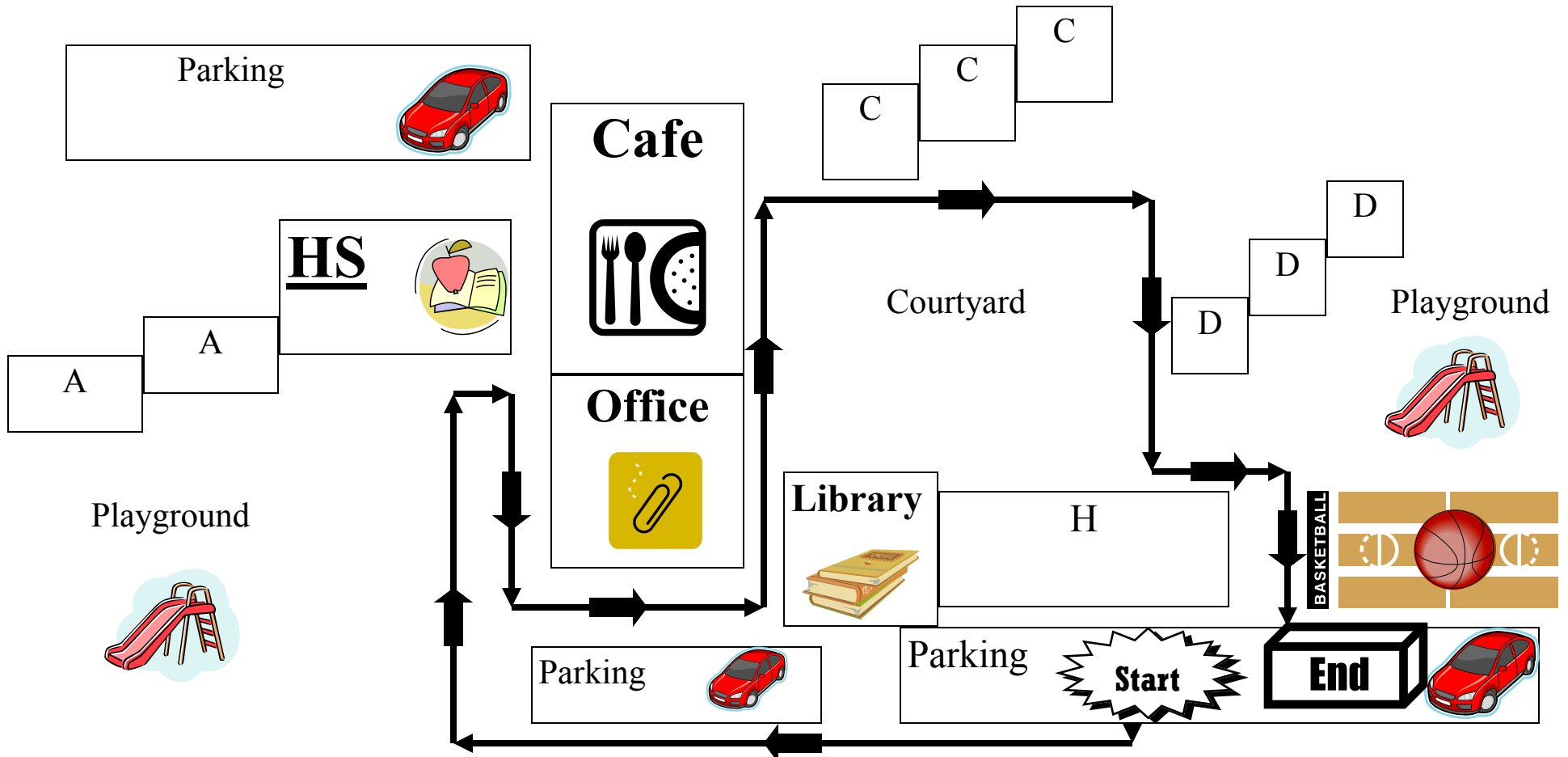
**For Nutrition Education for Wellness nutrition education programs**, contact the University of Hawaii Cooperative Extension Service at 1955 East-West Road, Agricultural Science Building 306, Honolulu, Hawaii 96822; (808) 956-4124 or go online at:

<http://www.ctahr.hawaii.edu/new>

This Institution is an equal opportunity provider and employer



# Benjamin Parker Elementary



Start at parking, go past office to HS → back down and around office → up to Café and past C/D bldg's → back down to parking lot.

1X Around = .25 mile

4X Around = 1 mile

HS = Headstart Classroom

\*map not drawn to scale