

CTAHR RESEARCH NEWS

January 2007
Volume 3, Issue 1

**Plant disease
sleuths**

**Research station
managers meet**

**Check out our
Research
Calabash!**



Anne Alvarez plating out *Erwinia* strains on selective media.

In this issue

- Plant disease sleuths... p 3
- Research station meeting ... p 7
- Research calabash ... p 8
- Grant winners ... p 10
- New publications ... p 10
- Great grant opportunities ... p 11
- Aloha to Keith Suyat-Terauchi ... p 16



*C.Y. Hu
Associate Dean and
Associate Director for
Research*



CTAHR Office of Research

College of Tropical Agriculture
and Human Resources
3050 Maile Way
Gilmore Hall 202
University of Hawaii at Manoa
Honolulu, HI 96822 USA
ph 808.956.4142
fx 808.956.9150
research@ctahr.hawaii.edu
www.ctahr.hawaii.edu

From the Associate Dean and Associate Director for Research

Welcome back to another new year! We had our share of visiting family members and friends during the holiday season who wanted to spend time in Hawaii. While we were happy to see them, we were also happy to get back to our daily routines. Speaking of routines, we are pleased to highlight Dr. Anne Alvarez's program as our cover story for this month. Dr. Alvarez has established a productive program in the last 30 years dealing with bacteria pathogens. Her work with anthurium, ginger, pineapple, tomato, among other crops, has been extremely valuable to many our stakeholders. She is not only an excellent scientist, who works closely with her graduate students, but she also helps many new faculty members establish their own programs. CTAHR is very fortunate to have Dr. Anne Alvarez among our fine faculty.

It now appears certain that all FY 2007 earmarks will be lost. We had hoped that certain earmarks might be restored, but as of today the outlook is not good. While the decisions will not be finalized until early February, I want to share with you our efforts to attempt to restore the funding. Nationally, the NASULGC Budget and Advocacy Committee – through its advocacy group, Cornerstone Government Affairs – asked each Land-Grant University to submit a one page report on the impacts of the loss of the special grants. You can read the Hawaii submission at this link: <http://www.nasulgc-bac.com/documents/FY2007/impacts/Hawaii.pdf>. Dean Hashimoto has also sent letters (<http://www.ctahr.hawaii.edu/vincent/CongressEarmarkSupportLetters.pdf>) to each of the Hawaii Congressional Delegation urging their support for this funding. In addition to the loss of 2007 earmarks, it is very likely we will lose most of our 2008 earmarks also. Therefore, we should prepare ourselves now in anticipation of the loss of all our special grants for 2008. If you have not submitted

a competitive grant proposal, you should seriously consider submitting one soon to keep your research program intact. We will continue to keep you informed on this important issue.

In addition to our Manoa campus facilities, CTAHR has more than a dozen branch research stations on four major islands. Each station is run by a farm manager, who reports to their respective county administrator. These stations are used by our faculty members to conduct research, extension and teaching projects and a great deal of CTAHR resources are used to maintain and support work conducted on these stations. Farm managers meet once a year to discuss issues relevant to the management of these stations. The most recent meeting was hosted by the Waimanalo Station by Roger Corrales and Ray Uchida. John Gordines was kind enough to share his impression of the meeting with all of us.

2007 marks the centennial for UH and for CTAHR, as it is the University's founding college. We have various events and activities planned for this year, and encourage everyone to participate in as many events as possible. As UH enters its second century in existence, it makes it extra special that our college shares in the excitement along side the University. We are looking forward to breaking new grounds and making new history in the next 100 years. Happy 100th to the University of Hawaii...and especially to CTAHR!

As we enter the New Year it is also time for our office to update our Plan of Work and to prepare our annual report. We continue to work on faculty productivity data, and we hope to share the results soon. As usual, we round out our issue with more grant opportunities, publications and grants received. Please continue to provide the **full citation** of your published papers to me. Your comments, ideas and suggestions are always welcome.

Sleuthing in the Alvarez laboratory

By Anne Alvarez

Department of Plant and Environmental Protection Sciences

Agricultural crops are constantly attacked by microorganisms which invade stems, leaves, and roots, destroy plant tissues and cause extensive crop losses. These microbial plant pathogens include fungi, nematodes, viruses, bacteria and mollicutes. Bacterial diseases are particularly insidious because they enter a new production system on propagative plant parts without showing any evidence of their presence. We specialize in the detection, etiology, and control of bacterial diseases, especially those which pose serious threats to Hawaiian agriculture. Etiology is the investigation of the causes or origins of disease, together with the relations of the causal factor(s) to the host. In the attached photos are some of our team members with their research projects.

Most bacterial pathogens are spread around the world on seed and planting stocks. When an invasive and virulent bacterial population is introduced into an island agroecosystem, such as Hawaii, it may become rapidly established in the new environment. New strains of bacteria invade the local crop, move in irrigation water, and are disseminated by tools and workers.



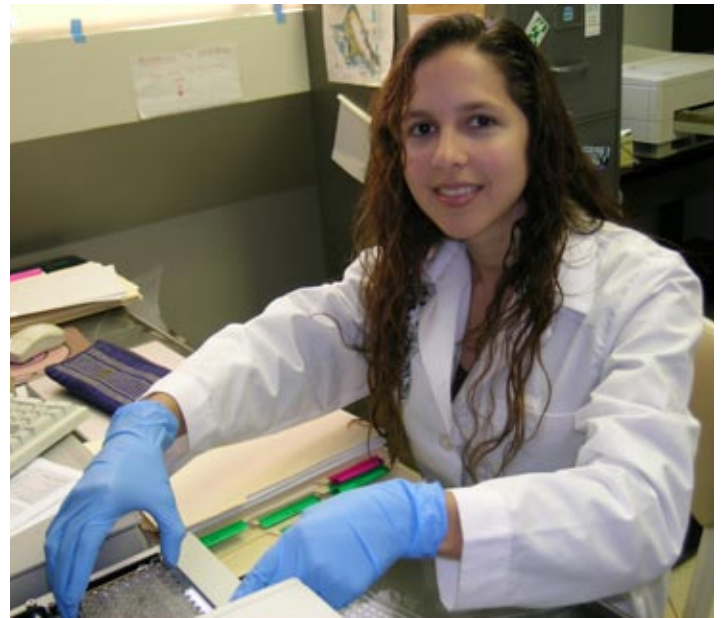
Pineapple leaves invaded by *Erwinia chrysanthemi*, which causes pineapple heart rot and fruit collapse. This disease was discovered in Hawaii for the first time in December, 2003.



The Alvarez Lab (L - R): Wendy Kaneshiro (Waipahu), Ryo Kubota (Japan), Tomie Vowell (Pearl City), Aren Ewing (California), Anne Alvarez (California), Gabriel Peckham (California), Asoka de Silva (Sri Lanka), Peter Toves (Guam), Mathews Paret (India) and Glori Marrero (Puerto Rico; missing from the photo). Ryo and Aren, whose major professors are Drs. Dan Jenkins and Gernot Presting, respectively, (MBBE Department), work on collaborative projects with our lab.



Asoka de Silva takes infected plant samples to the lab for pathogen isolation.



Glori Marrero performs metabolic and serological tests to identify the strains associated with pineapple heart rot disease.

Just as with human pathogens and diseases, we need to know the specific origin of each outbreak, how the recently introduced bacterial population differs from an endemic population, how the bacteria are transported, and where and how long they survive. This knowledge is necessary for disease containment and eventual elimination from the local crop. However, once a new invasive bacterial species has become well established on a local crop, often the only solution is to find ways to “live with it,” e.g., manage to keep disease levels below an economic threshold while still producing a high quality crop.

Many of Hawaii’s crops are affected by bacteria, and for the past 30 years our lab group has worked on



Mathews Paret has set up greenhouse trials to determine how long the ginger wilt pathogen, *Ralstonia solanacearum*, survives in soils and plant tissues.

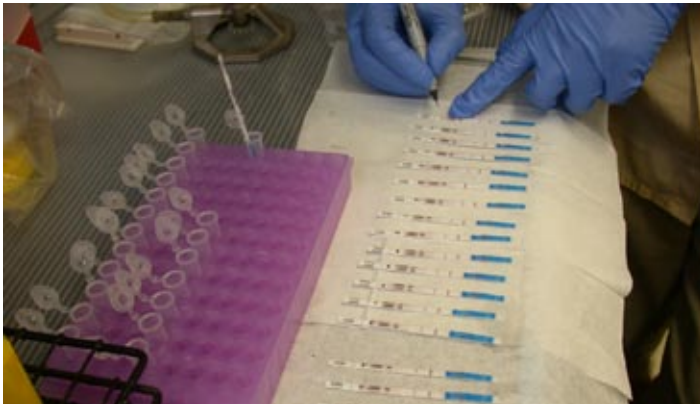


Wendy Kaneshiro samples irrigation water for *Erwinia chrysanthemi* strains.

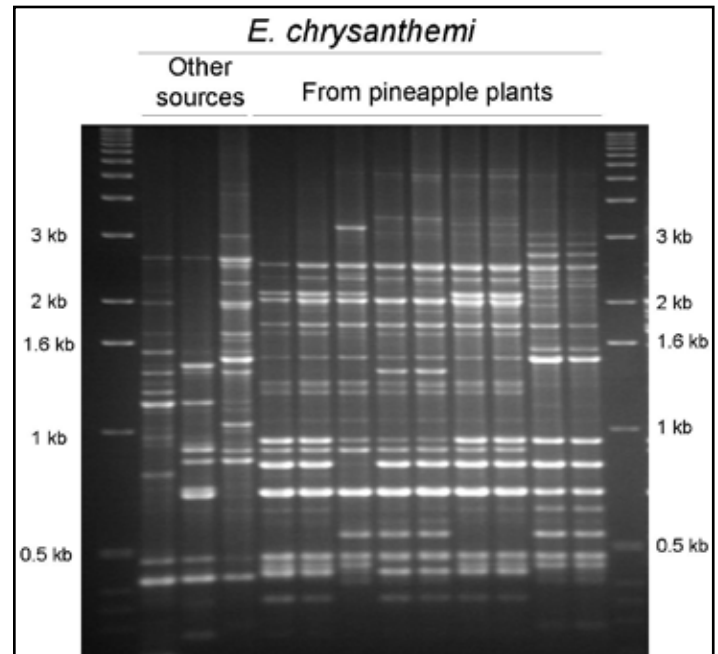
bacterial diseases of crucifers (cabbage and its relatives), lettuce, citrus and papaya. We now work on bacterial diseases of tomato, anthurium, ginger, and pineapple.

In the 1970's, we used biochemical tests, phage-typing and serological methods to differentiate bacterial populations originating from soil, plant sources, irrigation water, and/or alternate crops and weeds. In the 1980's, Dr. Albert Benedict, Carla Mizumoto and I generated large panels of monoclonal antibodies for detection and identification of various pathogen groups using hybridoma technology. Selected antibodies have been formatted into rapid immunodiagnostic strip tests that

can be used directly on field samples, thus eliminating the need for isolation into pure culture to identify the pathogen. We now combine immunodiagnostic and biochemical methods with DNA fingerprint analysis and DNA sequencing to discriminate among the bacteria. While immunodiagnostic methods are often more rapid and robust for identification at the species level, the DNA-based methods discriminate among various strains. The combination of methods has made it possible to establish the predominant inoculum source for a number of bacterial diseases.



Mathews uses a species-specific monoclonal antibody developed in our lab to detect *Ralstonia solanacearum*. The antibody has been formatted into an Immunostrip® by Agdia, Inc. (Elkhart, IN) and is now available for commercial use by diagnosticians.



DNA-fingerprints of 12 strains of *Erwinia chrysanthemi*, showing the differences between strains recovered from pineapple leaves and irrigation water from local and foreign sources.



Ryo Kubota loading DNA samples in an agarose gel to run his samples by electrophoresis.

In collaborative research with **Drs. Gernot Presting** and **Dan Jenkins** (both of the MBBE department), students **Aren Ewing**, **Kevin Schneider** and **Ryo Kubota** are using genomics/bioinformatics approaches to identify specific sequences that can be used to detect minute levels of bacterial plant pathogens in environmental samples. Unique DNA sequences have potential for analysis of population structure and genetic relationships between pathogens. In another collaborative effort with Dr. James Holm-Kennedy (Department of Electrical Engineering) and Paul Patek

(Department of Microbiology), undergraduate and graduate students are working on developmental stages of a coulombic biosensor for detection and identification of bacterial plant pathogens.

Once the disease has been detected, the pathogen has been characterized, and the principle inoculum source has been identified, the question becomes how does the disease spread in the local environment and how can the disease be contained and managed?

Chemicals (bactericides) rarely provide effective control for bacterial diseases except as disinfectants of tools and farming equipment. The more expensive antibiotics – though initially effective – are associated with the development of resistant mutants; and because of concerns to human health, they are not recommended for long-term field use. Thus, we focus on sustainable methods, which include modification of production practices to eliminate the pathogen and use of beneficial bacteria for biological control to protect the plants from subsequent invasion.



Peter Toves and Tomie Vowell smiling over their successful attempts to control bacterial blight using a consortium of beneficial bacteria. Tomie is holding the treated plant; Peter's plant was not treated.



Anne Alvarez
Hometown: Modesto, California
Joined CTAHR: 1973
Educational History: B.A. Stanford University, M.S. and Ph.D. University of California, at Berkeley.
Specialization: Plant Pathology
Current Work: Bacterial diseases: detection, etiology and control
Languages spoken: English, German, Spanish



Peter and Tomie examining autophotographs produced by exposing X-ray film to a bioengineered bioluminescent strain of the bacterial blight pathogen. Colonization of the plant tissues is evident as black areas on the X-ray film even when no visible symptoms are present on the latently infected leaves.

CTAHR Farm Managers Meet

By John Gordines

Farm manager, Kauai Research Station

On Thursday and Friday, November 16 and 17, 2006, CTAHR directors, county administrators, and farm managers from all the islands met November 16th this past year at Manoa. CY Hu, Associate Dean and Associate Director for Research, shared his vision and goals for the college which included competing at the national level, addressing the needs of CTAHR stakeholders, and diversifying the state economy. He also urged aligning the college with the new Strategic Plan and developing branch station websites.

Meeting attendees; (L-R) Dennis Ida, Farm Manager, Waiakea/Volcano/Malama-Ki Stations; Alan Umaki, Farm Manager, Waialea Station; Wayne Nishijima, Associate Dean for Extension; Terry Sekioka, Kauai County Administrator; Ray Uchida, Interim Oahu County Administrator; Frank Sekiya, Frankie's Nursery; Ken Leonhardt, Extension Specialist; Dale Uno, Director, Office of Communication Services; Kevin Sewake, Interim Hawaii County Administrator; John Gordines, Farm Manager, Kauai Station; Susan Migita, Farm Manager, Poamoho Station; Jean Takemoto, Secretary, Oahu County Extension Office; CY Hu, Associate Dean for Research; Harold Keyser, Maui County Administrator; Angel Magno, Foreman, Waiakea Station; Trent Hata, Research Support, Komohana Station; Gaillane Maehira, Foreman, Volcano Station.



Ruddy Wong, Director of Administrative Services, provided the group with information regarding the use of University real property and updates for usage of research station facilities.

Since water is such a valuable resource, Ray Uchida, Interim Oahu County Administrator, highlighted water use guidelines and policies with relation to usage at the research stations. He suggested that PI's help to defray irrigation costs for their projects by including it as an expense on their Plot Allocation Request Forms.

Charlie Nagamine, education specialist for PEPS gave a Power Point presentation on "label interpretation" and displayed new personal protective equipment that has become available.

Our EHSO allied health and safety officer, Mark Burch, provided updates on fork lift training, fire extinguisher inspections and HAZMAT program information.

An overview of Hawaii State Laws on conducting interviews for hiring new personnel and employment discrimination guidelines was given by Janice Muraoka, personnel officer.

The next day, participants met at the Waimanalo Research Station for a tour of North Shore nurseries. The first stop was Frankie's Nursery which specializes

in tropical fruit trees. Next, the group drove to Leilani Nursery which specializes in propagation and sale of holiday potted plants such as poinsettias. Leilani's Nursery is the home of the "Hot Water Shower" created by CTAHR entomologist Dr. Arnold Hara, used for disinfesting plants for coqui frogs, and the group watched a demonstration of the process there. The final stop of the tour was back at the Waimanalo Research Station, where Dr. James Brewbaker shared some new corn varieties, which the group tasted and evaluated, and Dr. Ken Leonhardt showed his new ornamental ginger varieties and his work with the wiliwili gall wasp epidemic.

The day convened with an unforgettable luncheon hosted by Roger Corrales and his staff at the Waimanalo Research Station. Thanks to everyone, especially Dale Uno, for all the hard work!

A peak into the calabash

By Doug Vincent

Special Program Director for Grants and Contracts

Hawaii Farm Bureau Federation Grants –

Due: February 1, 2007.

Reminder that Hawaii Farm Bureau Federation Grants are due February 1, 2007. A reminder that all HFBF grants must be submitted to ORS prior to submission to Hawaii Farm Bureau. Guidelines are here: http://www.ctahr.hawaii.edu/vincent/2007_Hawaii_Farm_Bureau_RFP.pdf

Regulatory Compliance Reminders and Training

Human Subjects Research

The University of Hawaii Committee on Human Subjects is presenting several investigator workshops on human subjects research. The workshop will provide a basic understanding of the ethics and principles of human subjects research and what is required of investigators at UH. The workshop also meets the UH and NIH requirement for human subjects research training. Workshops are open to faculty, staff and students. These one-day workshops are free, and are scheduled for the following dates:

Wednesday, January 31, 2007 – 8:30 am – 12:30 pm, Law School Classroom #1

Tuesday, February 6, 2007 – 8:30 am – 12:30 pm, Law School Classroom #3

Friday, February 9, 2007 – 12:30 pm – 4:30 pm, Law School Classroom #1

If you need more information, contact the CHS Compliance Officer, Bill Dendle at 956-8287 or visit the CHS web site at <http://www.hawaii.edu/irb/>.

Recombinant DNA Research

UH-Manoa recently hosted a National Institutes of Health training session on January 10, 2007 entitled “Oversight of Research Involving Recombinant DNA Molecules.” The NIH Office of Biotechnology Activities is the federal agency with oversight responsibilities for all research using recombinant DNA. The Office of Biological Safety conducts training sessions – the next training session will be held Wednesday, March 7, 2007. Contact the Biosafety Office at biosafe@hawaii.edu to reserve your space. A more complete training schedule for 2007 can be found here: <http://www.hawaii.edu/ehso/bio/training.htm>. The Biological Safety Program also offers WebCT on-line training.

UH policy stipulates that all recombinant DNA research must receive Institutional Biosafety Committee (IBC) approval prior to starting the activities. USDA also requires prior approval for all research using recombinant DNA. The IBC meets quarterly and the submission deadline for Biosafety protocols is 12:00 noon on the last working day of February, May, August and November. Form fillable (Microsoft Word and .PDF files) Biosafety Program forms can be found here: <http://www.hawaii.edu/ehso/bio/forms.htm>. The comprehensive UH Biological Safety Manual is on-line at: <http://www.hawaii.edu/ehso/bio/frames1.htm>. Contact the Biological Safety Officer Hubert Olipares for more information at 956-3197 or go the Biological Safety website at: <http://www.hawaii.edu/ehso/bio/>.

Vertebrate Animal Research, Teaching and Training

All activities using vertebrate animals require approval by the University of Hawaii Institutional Animal Care and Use Committee (IACUC). Vertebrate animal work cannot begin before committee approval is granted. The UH IACUC meets monthly and protocols are due on the second Wednesday of each month by 12:00 noon to be considered for that month’s meeting. Consult the meeting schedule for more information: <http://www.hawaii.edu/ansc/IACUC/meetingschedule.html>. Vertebrate Animal Use protocols are approved annually and the form-fillable (MS Word and Adobe Acrobat) and available on-line here: <http://www.hawaii.edu/ansc/IACUC/protocolforms.html>. There are also training requirements for vertebrate animal use – at the minimum all persons listed on an IACUC protocol must complete a WebCT review of regulations. Other training specific to the animal use procedures are provided by the University Veterinarian. The University Veterinarian, Sylvia Kondo can be reached at 956-8770 or by e-mail at uhtlas@hawaii.edu. For protocol approval information, contact the Animal Care Compliance Officer Norman Magno at 956-4446 for more information or consult the IACUC website here: <http://www.hawaii.edu/ansc/IACUC/>.

Office of Research Services

The Office of Research Services will again offer their Grant and Contract Certification Program. This time the program will be offered via the Hawaii Interactive Television Service to the neighbor islands and off-Manoa sites on Oahu. The program will originate in Kuykendall 201 and be at the following sites:

Kapiolani CC – Naio Building Room 206
Leeward CC – Library Room 116
Windward CC – Akoakoa Room 113
Kauai CC – Learning Resource Center, Room 122
MCC Molokai Education Center – Room 103
UH Center at West Hawaii – Building 4, Room 1
UH-Hilo – University Classroom Building Room 122

All programs begin at 9:00 am and end at 1:00 pm.

- Friday, January 26, 2007 – ORS Overview and Compliance Overview
- Friday, February 2, 2007 – Financial Compliance Issues and Indirect Cost Returns
- Friday, February 16, 2007 – Cost Sharing and Program Income
- Friday, March 9, 2007 – Proposal Preparation and Processing, Proposal Budgets and Contracts Preparation and Processing
- Friday, March 16, 2007 – Electronic Research Administration Tools
- Friday, March 30, 2007 – Receiving an Award from an External Sponsor and Administering an Award.

To register for the program go here: http://www.hawaii.edu/ors/certification_enroll.html

Improvements ahead for Grants.gov

Beginning April 1, 2007 (no foolin'), you might notice some changes with Grants.gov website. First, Grants.gov will be adding Google™ search capabilities to their web site. And not only will it provide ability to search the main Grants.gov pages but also any of the attachments (RFAs, instructions, etc.) tied to each grant opportunity. The more substantial change will be the transition away from the current PureEdge Reader system for filling out forms to an Adobe Acrobat system of forms management. All application packages posted to Grants.gov after April 1, 2007 will use Adobe forms. The Adobe forms will use Adobe Reader 7.0.8 and will be available free on the Grants.gov site. The Pure Edge format will be phased out and Pure Edge forms will be used through September 30, 2007. The key point is that there will be **little to no difference** between the current forms and the new forms using Adobe. The advantage to using Adobe Forms is the stronger capability to “stitch” the various attachments together with the forms to make a complete grant package. See the Grants.gov web site for more information: <http://www.grants.gov/>.

Internal UH Funding Opportunities

The University Research Council funds small research and travel grants for faculty. The University of Hawaii **Faculty Travel Fund** supports travel, up to \$2,000, by full-time faculty and staff members to professional conferences, for the purpose of presenting results of research and/or scholarship, when it can be demonstrated that such activities could result potentially in additional extramural funding. Applications are accepted at anytime, **no later than four weeks before the date of departure**. Guidelines are here: http://www.hawaii.edu/urc/pdf/factravel_g.pdf

The University Research Council **Research Relations Fund** supports, up to \$5,000, selected scholarly and creative activities of full-time faculty and staff whose disciplines do not traditionally receive significant extramural funding. Support is limited to small self-contained projects. Priority is given to proposals that are designed to lead to extramural funding in the future. Guidelines are here: http://www.hawaii.edu/urc/pdf/resrel_g.pdf and the deadline for submission is: **Tuesday, March 20, 2007**.

The University Research Council **Special Fund for Innovative Scholarship and Creative Work** provides support to full-time faculty and staff whose disciplines do not traditionally receive significant extramural funding. Priority is given to new tenure-track faculty. Among the purposes for this funding are 1) to support partially a unique and innovative scholarly project or creative work for which extramural funding is not available. Applicants must demonstrate that they either have been unsuccessful in seeking support from other sources or are in the process of seeking such support. Priority will be given to proposals with significant matching intramural support (from a unit or department) and designed to lead to future extramural support. 2) To support travel by faculty/staff who are principal officers (i.e. president or president-elect) in major professional societies or associations. Deadline is **Friday, April 20, 2007**. Guidelines are found here: http://www.hawaii.edu/urc/pdf/special_g.pdf

More grant winners, wow!

By Doug Vincent
Special Program Director for Grants and Contracts

Since the December issue of CTAHR Research News, we have received these new grants. Four (4) grants for an additional \$285,000. Rachel's grant will go to Kaiser hospital, but can be used to support UH graduate students. Congratulations to the clever faculty members who achieved these successes. In just over half the FY 2007 state fiscal year, CTAHR has earned 126 awards for \$19,120,705. In the previous state fiscal year (FY 2006), CTAHR won 171 awards for \$19,860,322. We have nearly reached our FY 2006 funding level. We face, however, a two-pronged reality check – the current year's total benefits from three very large, one time only grants – each one well over \$1 million dollars. If we subtract out those big grants, we are actually behind last year's mark. Our other challenge is the loss of our sizeable Congressionally-funded earmark grants (TSTAR, Floriculture, Minor Crops, and others). These awards represent an additional \$6.5 – 7.5 million dollars that will be lost to CTAHR. If we lose those funds, and I see nothing of late that makes me think otherwise, we will have an additional shortfall. There is still time to seek extramural funding – the open grants listed elsewhere in *CRN* are opportunities to broaden your and CTAHR's portfolio of funding. It appears that we will not be able to rely upon the generous support of our Congressional

delegation to support our activities next year. So we have to seek it elsewhere. Your colleagues listed below have done so already – sought and received additional funding. I urge you to find an opportunity and go after it. To those already successful, we offer our thanks and our congratulations. *Well done!*

Yong Li (HNFAS)

Rapid Quantitation of two Major Food-Borne Pathogens in Hawaii by Using Real-Time PCR.
HCF-G.F. Straub Trust. \$49,750.

Claire Nakatsuka (FCS)

Military 4-H Grant.
Kansas State. \$15,000.

Rachel Novotny (HNFAS/Kaiser)

Breast Density Assessment by Dual Energy X-Ray Absorptiometry in Women and Girls.
U.S. Army Medical Research and Material Command.
\$221,000.

Robert Paull (TPSS)

Landscape Research.
University of Hawaii Foundation. \$2,000.

Russell Yost (TPSS)

Recycling Nutrients in Animal Waste Liquids through High Productivity Tropical Forages.
Natural Resources Conservation Service (NRCS). \$218,250.

New faculty publications

Greg Bruland (NREM)

Bruland, G.L., C.J. Richardson, and S.C. Whalen. 2006. Spatial variability of denitrification potential and related soil properties in created, restored and paired natural wetlands. *Wetlands* 26:1042-1056.

Grunwald, S., V. Ramasundaram, G.L. Bruland, and D.K. Jesseman. 2007. Expanding distance education in the spatial sciences through virtual learning entities and a virtual GIS computer laboratory. *International Journal of Distance Education Technologies*, 5:54-69.

Daniel Rubinoff (PEPS)

Daniel Rubinoff, Stephen Cameron, And Kipling Will. 2006. Genomic Perspective on DNA Barcodes. *Journal of Heredity* 2006:97(6):581-594

Rachel Novotny (HNFAS/Kaiser)

Murphy S, Blitz C, Novotny R. The Pacific Tracker. *Hawaii Medical Journal.* 2006;65:175-178.

Novotny R, Daida Y, Grove J, Le Marchand L, Vijayadeva V. Asian adolescents have higher trunk:peripheral fat ratio than Whites. *J Nutr* 2006; 136:642-647.

Daida Y, Novotny R, Grove J, Acharya S, Vogt T. Ethnicity and Nutrition of Adolescent Girls in Hawaii. *J of Am Dietet Assoc.* 2006; 106(2):221-226.

More funding opportunities abound!

By Doug Vincent
Special Program Director for Grants and Contracts

One of the complaints I hear frequently is that there are no funding programs that target local problems. In fact, there are many. Listed among the open funding opportunities below are several that either target Hawaii or the Pacific or the Western region. The Hawaii Farm Bureau Federation, the Hawaii Community Foundation, U.S. EPA Region 9, and the USDA NRCS all have open opportunities that target Hawaii problems or our region. Besides these regional

opportunities there are still many other opportunities open and available for funding. Remember, the answer is no, unless you ask. We still do not know if any of our Congressional earmarks will be restored for FY 2007. We remain optimistic but we must also plan for the worst. Finding other support for your activities is one mechanism to buttress your program for the uncertain future. As always, if our office can support your endeavors, please let us know.

Hawaii Farm Bureau Federation
Agriculture Research and Market Development
Proposal Deadline: February 1, 2007
http://www.ctahr.hawaii.edu/vincent/2007_Hawaii_Farm_Bureau_RFP.pdf

Hawaii Community Foundation
Organizational Capacity Building Program
Implementation Grants
Planning Grants
Executive Transition Grants
Strategic Merger or Partnership Grants
Proposal Deadline: February 1, 2007
http://www.hawaiicommunityfoundation.org/doc_bin/grant_rfps/OCB_2007_Planning.pdf

U.S. Department of Health and Human Services
Substance Abuse and Mental Health Services Administration (SAMHSA)
Statewide Consumer Network Grants
Proposal Deadline: February 1, 2007
http://www.samhsa.gov/Grants/2007/sm_07_002.aspx

U.S. Department of Agriculture
CSREES – Higher Education Challenge Grants
Proposal Deadline: February 1, 2007
<http://www.csrees.usda.gov/fo/fundview.cfm?fonum=1082>

Civic Ventures – The Purpose Prize
Proposal Deadline: February 1, 2006
<http://www.leadwithexperience.org/prize/index.cfm>

National Aeronautics and Space Administration
ROSES2006: Ocean Biology and Biogeochemistry
Proposal Deadline: February 1, 2007
<http://nspires.nasaprs.com/external/solicitations/summary.do?method=init&solId={307FF8D5-59A9-E2E0-0637-6ED8AB166C4F}&path=open>

U.S. Department of Commerce
National Oceanic and Atmospheric Administration
Social Science Fellowship in National Estuarine Research Reserve System
Proposal Deadline: February 1, 2007
<http://www.grants.gov/search/search.do?oppld=12017&mode=VIEW>

U.S. Department of Agriculture
NRCS – Conservation Innovation Grants
Proposal Deadline: February 2, 2007
<http://www.nrcs.usda.gov/programs/cig/>

U.S. Department of Agriculture
Food and Nutrition Service – Women, Infant, Children Revitalizing Quality Nutrition Services in WIC
Letter of Intent Due: February 5, 2007
Proposal Deadline: April 2, 2006
<http://www.fns.usda.gov/oane/menu/DemoProjects/WICSPG/FY2007/Grants07.htm>

U.S. Department of Agriculture
CSREES - Special Research Grant – Citrus Tristeza
Proposal Deadline: February 7, 2007
http://www.csrees.usda.gov/funding/rfas/pdfs/07_citrus_tristeza.pdf

U.S. Department of the Interior
U.S. Fish and Wildlife Service
Cooperative Endangered Species Grants (must partner with state agency)
Proposal Deadline: February 7, 2007
http://www.fws.gov/endangered/grants/section6/FY07_CESCF_Announcement.pdf

U.S. Department of Education
Transition to Teaching Grant Program – Local Projects
Letter of Intent Due: February 7, 2007
Proposal Deadline: March 26, 2007
<http://a257.g.akamaitech.net/7/257/2422/01jan20071800/edocket.access.gpo.gov/2007/pdf/E7-34.pdf>

U.S. Department of Justice
Office on Violence Against Women
Grants to Reduce Domestic Violence, Dating Violence, Sexual Assault, and Stalking on Campus Program
Letter of Intent Due: February 8, 2007
Proposal Deadline: March 8, 2007
<http://www.usdoj.gov/ovw/docs/finalcampussolicitation07.pdf>

U.S. Department of Energy
Office of Science
Ethical, Legal and Societal Implications (ELSI) of Research on Alternative Bioenergy Technologies, Synthetic Genomics, or Nanotechnologies.
Pre-Applications Due: February 8, 2007
Proposal Deadline: April 19, 2007
<http://www.science.doe.gov/grants/FAPN07-16.html>

U.S. Department of Agriculture
Agricultural Marketing Services
Federal-State Marketing Improvement Program
Proposal Deadline: February 12, 2007
<http://www.ams.usda.gov/tmd/fsmip.htm>

U.S. Department of Agriculture
CSREES
Integrated Research, Education and Extension Competitive Grants Program
Integrated Pest Management – Crops at Risk Program
Proposal Deadline: February 12, 2007
<http://www.csrees.usda.gov/fo/fundview.cfm?fonum=1081>

U.S. Department of Agriculture
CSREES
Integrated Research, Education and Extension Competitive Grants Program
Integrated Pest Management –Risk Avoidance and Mitigation Program
Proposal Deadline: February 12, 2007
<http://www.csrees.usda.gov/fo/fundview.cfm?fonum=1125>

U.S. Environmental Protection Agency
Region 9
Wetlands Program Development Grants: 2007 RFP
Proposal Deadline: February 12, 2007
<http://www.epa.gov/region09/funding/wetlands-07.html>

U.S. Department of Commerce
National Oceanic and Atmospheric Administration
National Ocean Sciences Competition for High School Students
Proposal Deadline: February 12, 2007
<http://www.grants.gov/search/search.do?oppld=12103&mode=VIEW>

U.S. Department of Agriculture
CSREES – National Research Initiative-Competitive Grants Program
Plant Genome
Proposal Deadline: February 14, 2007
<http://www.csrees.usda.gov/fo/fundview.cfm?fonum=1604>

U.S. Department of Agriculture
CSREES – National Research Initiative-Competitive Grants Program
Agricultural Prosperity for Small and Medium-Sized Farm
Proposal Deadline: February 14, 2007
<http://www.csrees.usda.gov/fo/fundview.cfm?fonum=1200>

U.S. Department of Agriculture
CSREES – National Research Initiative-Competitive Grants Program
Plant Biology (C): Biochemistry
Letter of Intent Due: December 6, 2006
Proposal Deadline: February 14, 2007
<http://www.csrees.usda.gov/fo/fundview.cfm?fonum=1115>

U.S. Department of Agriculture
CSREES – National Research Initiative-Competitive Grants Program
Plant Biology (D): Growth and Development
Letter of Intent Due: December 6, 2006
Proposal Deadline: February 14, 2007
<http://www.csrees.usda.gov/fo/fundview.cfm?fonum=1116>

U.S. Department of Agriculture
CSREES – National Research Initiative-Competitive Grants Program
Plant Genome (D): Applied Plant Genomics (CAP)
Letter of Intent Due: December 6, 2006
Proposal Deadline: February 14, 2007
<http://www.csrees.usda.gov/fo/fundview.cfm?fonum=1604>

U.S. Department of Agriculture
CSREES – National Research Initiative-Competitive Grants Program
Biology of Weedy and Invasive Species in Agroecosystems
Letter of Intent Due: December 6, 2006
Proposal Deadline: February 14, 2007
<http://www.csrees.usda.gov/fo/fundview.cfm?fonum=1123>

U.S. Department of Agriculture
CSREES – National Research Initiative-Competitive Grants
Program
Soil Processes
Letter of Intent Due: December 6, 2006
Proposal Deadline: February 14, 2007
<http://www.csrees.usda.gov/fo/fundview.cfm?fonum=1605>

U.S. Department of Agriculture
CSREES – Special Research Grants Program
Pest Management Alternatives
Proposal Deadline: February 15, 2007
<http://www.csrees.usda.gov/fo/fundview.cfm?fonum=1114>

U.S. Department of Agriculture
Forest Service
Wood Education and Resource Center
Proposal Deadline: February 15, 2007
<http://www.na.fs.fed.us/werc/grants.shtm>

U.S. Department of State
Bureau of Educational and Cultural Affairs
Near East Asia – South Asia Undergraduate Exchange
Program
Proposal Deadline: February 15, 2006
<http://exchanges.state.gov/education/rfgps/feb15rfgp.htm>

National Fish and Wildlife Foundation
Plant Conservation Alliance
Preproposals due: February 15, 2007
Proposal Deadline: March 23, 2007
<http://www.nps.gov/plants/nfwf/index.htm>

U.S. Department of Agriculture
CSREES – Biotechnology Risk Assessment Grant Program
Proposal Deadline: February 15, 2007
<http://www.csrees.usda.gov/fo/fundview.cfm?fonum=1075>

U.S. Department of Agriculture
Natural Resources Conservation Service
Lower Hamakua Ditch Land Treatment Program
Proposal Deadline: February 16, 2007
http://www.hi.nrcs.usda.gov/programs/lower_hamakua.html

U.S. Department of Agriculture
CSREES - Integrated Research, Education, and Extension
Competitive Grants Program:
Integrated Pest Management Methyl Bromide Transitions
Program
Proposal Deadline: February 21, 2007
<http://www.csrees.usda.gov/fo/fundview.cfm?fonum=1107>

U.S. Department of Health and Human Services
National Institutes of Health
Environmental Sensors for Personal Exposure Assessment
(SBIR [R43/R44])
Proposal Deadline: February 21, 2007
<http://grants.nih.gov/grants/guide/rfa-files/RFA-ES-07-001.html>

U.S. Department of Agriculture
Natural Resources Conservation Service
FY 2007 Pacific Islands Area Conservation Innovation
Grant Program
Proposal Deadline: February 23, 2007
<http://www.grants.gov/search/search.do?mode=VIEW&oppld=12168>

U.S. Environmental Protection Agency
Sources and Atmospheric Formation of Organic Particulate
Matter
Proposal Deadline: February 27, 2007
http://es.epa.gov/ncer/rfa/2007/2007_star_organic_pm.html

Hawaii Community Foundation
Medical Research Grants
Proposal Deadline: March 1, 2007
http://www.hawaiicommunityfoundation.org/doc_bin/grant_rfps/RFP-MedResRFP2007.pdf

National Science Foundation
Environmental Engineering
Proposal Deadlines: March 1, 2007, September 15, 2007
http://www.nsf.gov/funding/pgm_summ.jsp?pims_id=501029

National Science Foundation
Environmental Sustainability
Proposal Deadlines: March 1, 2007, September 15, 2007
http://www.nsf.gov/funding/pgm_summ.jsp?pims_id=501027

National Science Foundation
Environmental Technology
Proposal Deadlines: March 1, 2007, September 15, 2007
http://www.nsf.gov/funding/pgm_summ.jsp?pims_id=501030

National Science Foundation
Energy for Sustainability
Proposal Deadlines: March 1, 2007, September 15, 2007
http://www.nsf.gov/funding/pgm_summ.jsp?pims_id=501026

National Science Foundation
Biotechnology (BTEC)
Proposal Deadlines: March 1, 2007, September 15, 2007
http://www.nsf.gov/funding/pgm_summ.jsp?pims_id=501029

Department of Health and Human Services
National Institute of Health
Long-Term Weight Maintenance: Basic and Clinical Studies
(R01)
**Proposal Deadline: March 5, 2007, July 5, 2007,
November 5, 2007**
<http://grants.nih.gov/grants/guide/pa-files/PA-07-053.html>

Department of Health and Human Services
National Institute of Health
Retirement Economics (R01)
**Proposal Deadline: March 5, 2007, July 5, 2007,
November 5, 2007**
<http://grants.nih.gov/grants/guide/pa-files/PA-07-075.html>

Department of Health and Human Services
National Institute of Health
Parenting Capacities and Health Outcomes in Youth and
Adolescents (R01)
**Proposal Deadline: March 5, 2007, July 5, 2007,
November 5, 2007**
<http://grants.nih.gov/grants/guide/pa-files/PA-07-061.html>

U.S. Department of Energy – Chicago Service Center
Office of Biological and Environmental Research
New Analytical and Imaging Technologies for
Lignocellulosic Material Degradation, for Multiplexed
Screening of Plant Phenotypes.
Proposal Deadline: March 6, 2007
<https://e-center.doe.gov/iips/faopor.nsf/UNID/E569DBDE47BE80FF85257229006E3FC9?OpenDocument>

National Science Foundation
Microbial Genome Sequencing Program
Proposal Deadline: March 8, 2007
http://www.nsf.gov/publications/pub_summ.jsp?ods_key=nsf07531

U.S. Department of Energy – Chicago Service Center
Office of Biological and Environmental Research
Quantitative Microbial Biochemistry and Metabolic
Engineering for Biological Hydrogen Production
Proposal Deadline: March 8, 2007
<https://e-center.doe.gov/iips/faopor.nsf/UNID/D390B42A791A6F4585257229006EE9EF?OpenDocument>

U.S. Environmental Protection Agency – Region 9
Strategic Agricultural Initiative/Food Quality Protection Act
Proposal Deadline: March 29, 2007
http://www.ctahr.hawaii.edu/vincent/EPA_2007_FQPA_RFP.pdf

U.S. Department of Energy – Chicago Service Center
Office of Biological and Environmental Research
New Genomic Strategies and Technologies for Studying
Complex Microbial Communities Validating Genomic
Annotations
Proposal Deadline: March 20, 2007
<https://e-center.doe.gov/iips/faopor.nsf/UNID/E5EE262EBB18CEE085257230004F4337?OpenDocument>

U.S. Department of Health and Human Services
National Institute of Environmental Health and Safety
Superfund Basic Research and Training Program (P42)
Letter of Intent Due: January 21, 2007
Proposal Deadline: March 22, 2007
<http://grants.nih.gov/grants/guide/rfa-files/RFA-ES-06-003.html>

Hawaii Community Foundation
Ka Papa O Kakuhihewa Fund
Proposal Deadline: March 23, 2007
http://www.hawaiicommunityfoundation.org/doc_bin/grant_rfps/RFP-KPOKRFP2007.pdf

Hawaii Community Foundation
The Rev. Takie Okumura Family Fund
Young Children and Youth Grant Making Program
Proposal Deadline: March 30, 2007
http://www.hawaiicommunityfoundation.org/doc_bin/grant_rfps/RFP-Okumura_2007.pdf

U.S. Department of Agriculture
Rural Development – Rural Business Opportunity Grants
Proposal Deadline: March 30, 2007
<http://www.rurdev.usda.gov/rbs/buspr/rbog.htm>

U.S. Department of Agriculture
Food and Nutrition Service
FY 2007 Women, Infant and Children Special Project
Grants
Proposal Deadline: April 2, 2007
<http://www.fns.usda.gov/oane/menu/DemoProjects/WICSPG/WICSPG.htm>

U.S. Department of Agriculture
CSREES – Integrated Research, Education and Extension
Competitive Grant Program National Water Quality
Program
Proposal Deadline: April 4, 2007
<http://www.csrees.usda.gov/fo/fundview.cfm?fonum=1134>

National Science Foundation
Integrated Graduate Education and Research Traineeship
Program (IGERT)
Preliminary Proposal Due: April 5, 2007
Proposal Deadline: October 5, 2007
http://www.nsf.gov/publications/pub_summ.jsp?ods_key=nsf07540

National Science Foundation
Ethics Education in Science and Engineering
Proposal Deadline: April 10, 2007
http://www.nsf.gov/publications/pub_summ.jsp?ods_key=nsf07541

U.S. Department of Energy – Chicago Service Center
Office of Biological and Environmental Research
Program for Ecosystem Research
Proposal Deadline: April 10, 2007
<https://e-center.doe.gov/iips/faopor.nsf/UNID/03958C13FC1D4E8F8525722E005A6739?OpenDocument>

Hawaii Community Foundation
Hawaii Children's Trust Fund Community Awareness
Events
Proposal Deadline: April 13, 2007
http://www.hawaiicommunityfoundation.org/doc_bin/grant_rfps/RFP-HCTF_CommunityAwareness2007_RFP.pdf

U.S. Environmental Protection Agency
Science to Achieve Results (STAR) Program
An Interdisciplinary Approach to Examining the Links
between Social Stressors, Biodiversity and Human Health
Proposal Deadline: April 19, 2007
http://es.epa.gov/ncer/rfa/2007/2007_biodiversity_health.html

Hawaii Community Foundation
Group 70 Foundation Fund
Proposal Deadline: April 20, 2007
http://www.hawaiicommunityfoundation.org/doc_bin/grant_rfps/RFP-Group70_RFP_2007.pdf

U.S. Department of Energy
Office of Basic Energy Sciences – Chicago Service Center
Experimental Program to Stimulate Competitive Research
(EPSCoR) Building EPSCoR – State/National Laboratory
Partnerships
Pre-Application due: April 30, 2007
Proposal Deadline: July 16, 2007
<https://e-center.doe.gov/iips/faopor.nsf/UNID/A616F4E02E82F5868525724A0071740C?OpenDocument>

U.S. Department of Health and Human Services
National Institutes of Health
Understanding and Promoting Health Literacy (R01)
Letters of Intent Due: April 24, 2007, December 24, 2007
Proposal Due: May 24, 2007, January 24, 2008
<http://grants.nih.gov/grants/guide/pa-files/PAR-07-020.html>

U.S. Department of Health and Human Services
Administration for Children and Families
Head Start University Partnership Research Grants:
English Language Learners (ELLs) in Head Start and Early
Head Start Programs
Proposal Deadline: May 3, 2007
<http://www.acf.hhs.gov/grants/open/HHS-2007-ACF-OPRE-YF-0070.html>

U.S. Department of Agriculture
CSREES – National Research Initiative-Competitive Grants
Program
Microbial Genomics (B): Functional Genomics of
Microorganisms
Proposal Deadline: June 5, 2007
<http://www.csrees.usda.gov/fo/fundview.cfm?fonum=1091>

U.S. Department of Agriculture
CSREES – National Research Initiative-Competitive Grants
Program
Arthropod and Nematode Biology and Management (B)
and (C): Suborganismic Biology and Tools, Resources and
Genomics
Proposal Deadline: June 5, 2007
<http://www.csrees.usda.gov/fo/fundview.cfm?fonum=1602>

U.S. Department of Agriculture
CSREES – National Research Initiative-Competitive Grants
Program
Agricultural Markets and Trade
Proposal Deadline: June 5, 2007
<http://www.csrees.usda.gov/fo/fundview.cfm?fonum=1106>

U.S. Department of Agriculture
CSREES – National Research Initiative-Competitive Grants
Program
Animal Growth and Nutrient Utilization
Proposal Deadline: June 5, 2007
<http://www.csrees.usda.gov/fo/fundview.cfm?fonum=1067>

U.S. Department of Agriculture
CSREES – National Research Initiative-Competitive Grants
Program
Animal Genome
Proposal Deadline: June 5, 2007
<http://www.csrees.usda.gov/fo/fundview.cfm?fonum=1066>

U.S. Department of Agriculture
CSREES – National Research Initiative-Competitive Grants
Program
Air Quality
Proposal Deadline: June 5, 2007
<http://www.csrees.usda.gov/fo/fundview.cfm?fonum=1062>

U.S. Department of Agriculture
CSREES – National Research Initiative-Competitive Grants
Program
Human Nutrition and Obesity
Proposal Deadline: June 5, 2007
<http://www.csrees.usda.gov/fo/fundview.cfm?fonum=1095>

U.S. Department of Agriculture
CSREES – National Research Initiative-Competitive Grants
Program
Plant Biosecurity
Proposal Deadline: June 5, 2007
<http://www.csrees.usda.gov/fo/fundview.cfm?fonum=1521>

U.S. Department of Agriculture
CSREES – National Research Initiative-Competitive Grants
Program
Agricultural Markets and Trade
Proposal Deadline: June 5, 2007
<http://www.csrees.usda.gov/fo/fundview.cfm?fonum=1106>

U.S. Department of Agriculture
CSREES – National Research Initiative-Competitive Grants
Program
Arthropod and Nematode Biology and Management (B)
and (C): Suborganismal Biology and Tools, Resources and
Genomics.
Proposal Deadline: June 5, 2007
<http://www.csrees.usda.gov/fo/fundview.cfm?fonum=1602>

U.S. Department of Agriculture
CSREES – National Research Initiative-Competitive Grants
Program
Animal Genome
Proposal Deadline: June 5, 2007
<http://www.csrees.usda.gov/fo/fundview.cfm?fonum=1066>

U.S. Department of Agriculture
CSREES – National Research Initiative-Competitive Grants
Program
Animal Growth and Nutrient Utilization
Proposal Deadline: June 5, 2007
<http://www.csrees.usda.gov/fo/fundview.cfm?fonum=1067>

U.S. Department of Agriculture
CSREES – National Research Initiative-Competitive Grants
Program
Air Quality
Proposal Deadline: June 5, 2007
<http://www.csrees.usda.gov/fo/fundview.cfm?fonum=1062>

U.S. Department of Agriculture
CSREES – National Research Initiative-Competitive Grants
Program
Animal Protection and Biosecurity (C): Animal Biosecurity
Coordinated Agricultural Products (CAP)
Proposal Deadline: August 14, 2007
<http://www.csrees.usda.gov/fo/fundview.cfm?fonum=1522>

U.S. Department of Defense
United States Army Medical Research & Materiel
Command
Broad Agency Announcement
Proposal Deadline: September 30, 2007
<http://www.usamraa.army.mil/pages/index.cfm>

U.S. Department of Defense
National Biodefense Analysis and Countermeasures Center
Broad Agency Announcement
Proposal Deadline: September 30, 2007
<http://www.usamraa.army.mil/pages/index.cfm>

U.S. Department of Agriculture
Agricultural Marketing Service
Specialty Crop Block Grant Program
Proposal Deadline: October 11, 2007
<http://www.ams.usda.gov/fv/scbgp.html>

Aloha Keith!!

We also wish a fond aloha to Mr. Keith Suyat-Terauchi, Administrative Officer in CTAHR's fiscal office. Keith is leaving to join the fiscal office of the School of Ocean and Earth Science and Technology. Besides working with nearly every unit in CTAHR during his tenure in CTAHR. Keith has also worked closely with the Dean's Office in managing our fiscal affairs. We have appreciated his hard work and professionalism. Keith's last day was Friday, January 19, 2007. We wish him great success in his new position.

