

DON'T BRING BANANA PLANTS TO MOLOKA'I OR LANA'I

Banana Bunchy Top Virus Will Destroy Local Bananas!

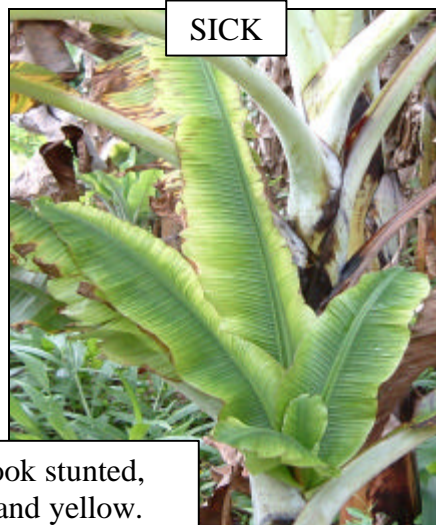
Banana Bunchy Top Virus (BBTV) is found on Maui, O'ahu, Kaua'i and the Big Island. The disease will stunt the growth of banana plants and cause them to stop producing fruit. BBTV has not yet been found on Moloka'i or Lana'i.

Have you looked at your banana plants lately?

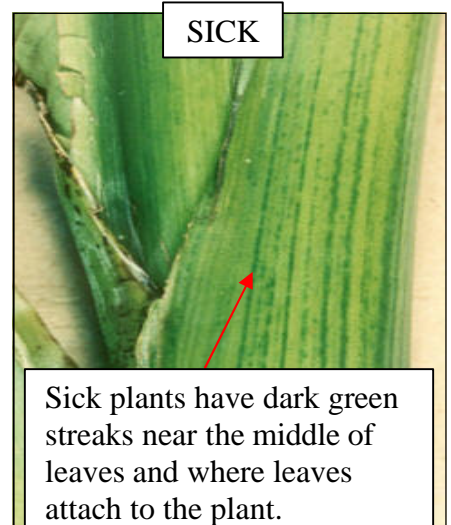


SICK

Sick plants look stunted, bunched up, and yellow.

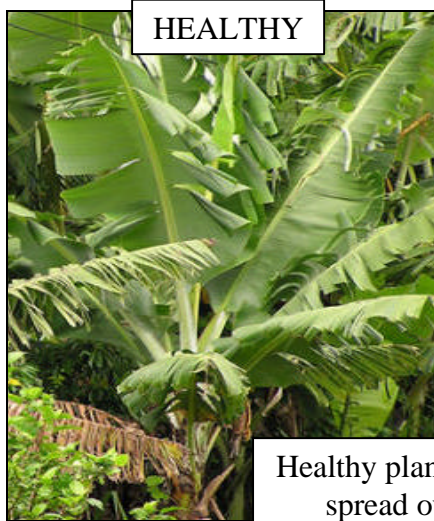


SICK



SICK

Sick plants have dark green streaks near the middle of leaves and where leaves attach to the plant.



HEALTHY

Healthy plants are wide open, spread out, and green.



HEALTHY



HEALTHY

Healthy plants are clear near the middle of leaves and where leaves attach to the plant.

If you think you have seen Banana Bunchy Top Virus or have any questions about the disease call:

**Moloka'i: University of Hawai'i – CES
Hawai'i Dept. of Agriculture**

**(808) 567-6934 (Moloka'i)
(808) 873-3555 (Maui)**

Lana'i: Hawai'i Dept. of Agriculture

(808) 873-3555 (Maui)

For more information contact: UH-CTAHR www.ctahr.hawaii.edu or the Banana Action Group www2.hawaii.edu/~banana

Photos courtesy of: UH-CTAHR, The Banana Action Group, HDOA, and Maui Invasive Species Committee
September 2004