

OAHU COUNTY EXTENSION UPDATE

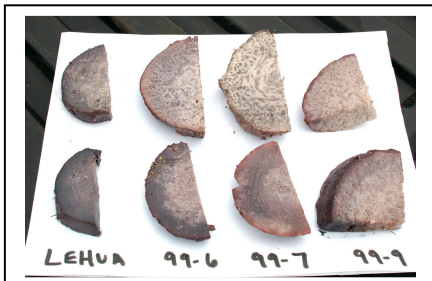
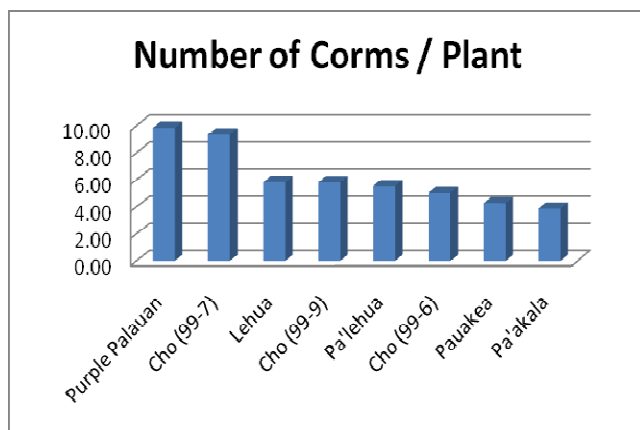
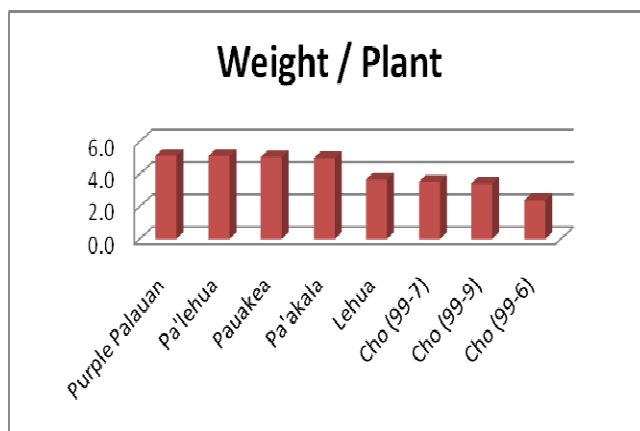


Jari Sugano & Steve Fukuda,
Oahu County Extension Agent
February 27, 2008

Ten months after planting, eight taro varieties grown under dryland conditions were harvested at the Waimanalo Experiment Station. A total of 48 plants were harvested from four replicated field plots. Overall yield and corm counts are tabulated below.

WEIGHT		
	Lbs. per Plant	Total Lbs.
Purple Palauan	5.1	247
Pa'lehua	5.1	246
Pauakea	5.1	243
Pa'akala	5.0	239
Lehua	3.7	176
Cho (99-7)	3.5	169
Cho (99-9)	3.4	164
Cho (99-6)	2.4	115

NUMBER OF CORMS		
	Av. Corms / Plant	Total Number
Purple Palauan	9.85	473
Cho (99-7)	9.35	449
Lehua	5.83	280
Cho (99-9)	5.81	279
Pa'lehua	5.54	266
Cho (99-6)	5.06	243
Pauakea	4.29	206
Pa'akala	3.88	186



Additional Work

We are currently evaluating Dr. John Cho's taro varieties under wetland conditions. Additional studies are also underway to evaluate consumer acceptability of these varieties. Factors such as taste, texture, gumminess, souring are being evaluated.

Tissue Cultured Banana Plants Available

Micro-propagated, disease free banana planting material are now available for sale and distribution. Specialty banana varieties are also being added to CTAHR's germ plasma collection for safe keeping. 'Disease free' does not mean these plants are resistant to the BBTV virus. Photo: Hooks, Perez, & Wang



Tissue Cultured Banana Plants Available (cont)

VARIETIES	AVAILABLE DATE
Apple/dwarf Brazilian	Feb 2008 (backorder)
Lakatan	Feb 2008
Ice cream banana	April 2008
Williams	April 2008
Lady finger	April 2008
Saba #1 - dippig	May 2008
Saba #2 - compact	May 2008
Chinese Williams	Aug 2008
Pisang Awak	Sept 2008
Tall Brazilian	Sept 2008
Mysore	Oct 2008
Bluefield	Oct 2008
Valery	Oct 2008
Largo/San Juan	Nov 2008
Dwarf Red	Nov 2008
Sucrier/Pisang Mas	Nov 2008
Zebrina	Dec 2008
Putalinga Kula (Tonga)	Dec 2008
Putalinga Hina (Toga)	Dec 2008

PRICES:

Unpotted plants: \$1.50

Potted plants: \$5.00

Proper Handling of Tissue Cultured Plants

- Banana plants for sale are pre-hardened (partially acclimated to conditions outside of tissue culture containers)
- Transplant bananas individually into ~ 4 inch pots containing a pre-moistened, well-drained media
- Place plants on elevated benches under 50% shade (using shade cloth). After 1 month, increase the light level approximately 20–25%. After an additional month, remove from shade completely and grow for 2 weeks.
- Keep plants properly irrigated and manage aphids
- Plants are now ready for field planting.
- Tissue culture plants should be isolated as far as possible from banana plants that contain banana aphids and/or BBTV.
- Bananas can be harvested about 9–12 months after trans-planting into the field (most varieties). For more information, call [956-2455](tel:956-2455) or visit www.ctahr.hawaii.edu/banana

To place an order, please contact one of the following researchers:

Eden Perez
Edenp@hawaii.edu
 358-3789

Koonhui Wang
koonhui@hawaii.edu
 956-2455

Jari Sugano
suganoj@ctahr.hawaii.edu
 247-0421 x 107

Kaneohe Extension office
 45-260 Waikalua Road
 Suite 101
 Kaneohe, HI 96744