

HERE'S WHAT YOU NEED TO DO...

All cut flowers and foliage, including lei, must be "certified pest-free" by USDA APHIS PPQ regardless of how they are transported from Hawai'i to the U.S. Mainland (U.S. Postal Service, FedEx, UPS or other cargo shippers, as baggage or hand carried).

- Order flowers, foliage, and lei from florists and nurseries/shippers that have a "compliance agreement" with USDA APHIS PPQ.
 - ✓ They will pack, seal, and stamp boxes indicating that the contents is pest-free prior to being sent or carried to the mainland U.S.
 - ✓ It is important not to open, add to, or tamper with the box once it has been sealed and stamped.
- Otherwise, take flowers, foliage, and lei yourself to USDA for inspection prior to transport to the mainland U.S.
 - ✓ Carefully look through flowers, foliage, and lei for insects and other foreign material. Discard any parts that contain obvious insects or insect damage.
 - ✓ Call USDA APHIS PPQ ahead of time for location, hours, updates, and questions, and to determine whether inspection by Hawai'i Dept of Agriculture (HDOA) is also necessary (destination other than U.S. mainland, or sending whole plants or parts of plants that can be used for propagation).
 - ✓ Take cleaned plant material, a clean, sturdy box, packing materials, and sealing tape to designated Inspection office.

Any shipment, baggage or hand-carried item containing a **single pest or even evidence of pest damage** may be subject to quarantine action, including confiscation, destruction, and/or fines.



WHAT DO INSPECTORS LOOK FOR?

Tapping products to recover any hidden pests and careful visual inspection with and without hand lens on 100% of plant material sent by air from Hawai'i



University of Hawai'i at Mānoa
College of Tropical Agriculture and Human Resources

A.H. Hara, R.Y. Niino-DuPonte, and S.K. Cabral
Komohana Research and Extension Center
Hilo, HI ph. (808)981-5199 (April 2014)

Dr. Arnold Hara's website:
<http://www.ctahr.hawaii.edu/haraa/index.asp>
UH CTAHR Publication & Information Central:
<http://www.ctahr.hawaii.edu/site/Info.aspx>

If you are flying with or mailing/shipping **whole plants (or plant parts that can be used for propagation)** from Hawai'i, they need to be inspected by Hawai'i Department of Agriculture (HDOA) instead. Call ahead to verify hours and for updates or questions.

HDOA PQ Offices (M-F; Closed on State holidays)

BIG ISLAND		
Hilo	(808) 974-4141	16 E. Lanikaula St.
Kona	(808) 326-1077	Kona Int. Airport, Kailua-Kona
O'AHU	(808) 832-0566	1849 Auiki St., Honolulu
KAUAI	(808) 274-3071	4398A Pua Loke St., Līhū'e
MAUI	(808) 872-3848	Kahului Airport, Kahului

State of Hawai'i HDOA Home Website: <http://hdoa.hawaii.gov/>
PQ Branch Website: <http://hdoa.hawaii.gov/pi/plant-quarantine-contacts/>

Photo credit:
Whitefooted ant R.H. Scheffrahn, University of Florida

SENDING FLOWERS TO THE MAINLAND? GRADUATION, LŪ'AU, WEDDINGS, HOLIDAYS

Cut flowers and foliage (including lei), fruits, and vegetables from Hawai'i may be hosts for fruit flies and other destructive pests and diseases not present in other states and have the potential to cause severe damage to crops and the environment.

USDA APHIS PPQ (U.S. Dept. of Agriculture, Animal & Plant Health Inspection Service, Plant Protection & Quarantine) requires inspection on all agricultural items prior to movement from Hawai'i to the U.S. mainland. Due to Federal quarantines, certain items are prohibited for export.

LEI PROHIBITED to U.S. MAINLAND

If you are taking lei, cut flowers and/or foliage with you from Hawai'i on a domestic flight (baggage or hand-carried), allow ample time before departure to have them inspected at USDA Airport Inspection points. For plant items being mailed, there are offices at or near the airports. Call ahead to verify location and hours, or for updates or questions.

USDA APHIS PPQ Offices

(M-F; Closed on Federal holidays)

BIG ISLAND

Hilo: (808) 933-9040
455 E. Lanikaula St.
Kona: (808) 326-1252
Kona Int. Airport, Kailua-Kona

O'AHU: (808) 834-3240
300 Rodgers Blvd. #58, Honolulu

KAUAI: (808) 632-2511
3901 Mokulele Loop, Līhū'e

MAUI: (808) 877-5261
Kahului Airport, Kahului

MOLOKA'I: (808) 357-6378
Moloka'i Airport, Ho'olehua

LANA'I: (808) 565-6443
Lana'i Airport, Lana'i City

USDA Home Website:

www.aphis.usda.gov

PPQ Website:

<http://www.aphis.usda.gov/wps/portal/aphis/ourfocus/planthealth>



KIKANIA



HALA (Pandanus)



MAUNALOA



KAUNA'OA (Dodder)





SEA GRAPE and MOCK ORANGE LEAVES



BLUE JADE

Other items **not allowed to be exported** from Hawai'i to U.S. mainland:

- Untreated, fresh fleshy or pulpy fruits and vegetables
- Berries, including fresh coffee beans → 
- Cactus
- Cotton
- Live insects, snails
- Seeds with fruit clinging, seed pods
- Sugarcane
- Ong choy (swamp cabbage, Chinese spinach) → 
- Sweet potato (raw)

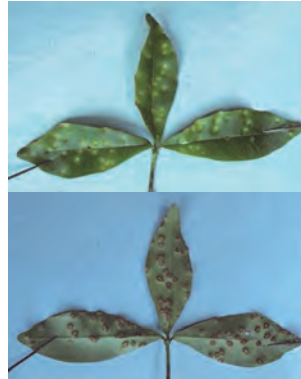
Source: USDA APHIS PPQ. Guidance for Mailing and Shipping Food and Agricultural Products from Hawai'i to the U.S. Mainland. Agriculture Inspection Notice (Oct. 2012).

PEST-FREE or CONFISCATED!

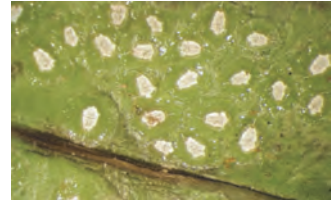
Commonly found pests on cut flowers and foliage in Hawai'i



MAILE



a fungus
Uromyces alyxiae



croton whitefly
Orchamoplatus mammaeferus



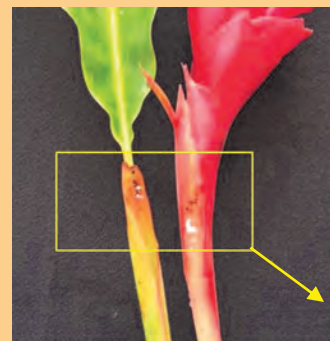
nigra scale
Parasaisseta nigra



hemispherical scale
Saissetia coffeae



wax scale
Ceroplastes rubens



RED GINGER
FLOWERS & FOLIAGE



Citrus mealybug • banana aphid • ants
Planococcus citri *Pentalonia nigronervosa*

Where pests are harbored in red ginger:

- Pull leaf away from flower, look into leaf sheath
- Look deep between red bracts



BIRD OF PARADISE
FOLIAGE



check undersides of discolored or puckered leaves for insects



magnolia white scale
Pseudaulacaspis cockerelli



DRACAENA
FOLIAGE



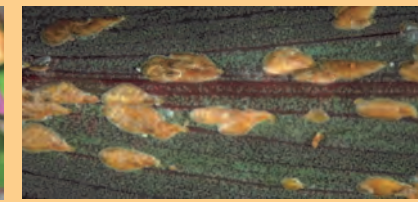
lesser snow scale
Pinnaspis strachani



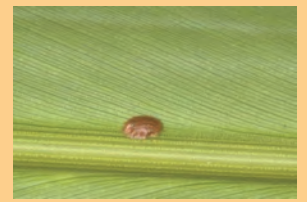
TI LEAVES



spiraling whitefly
Aleurodicus dispersus



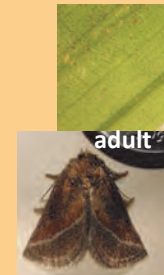
ti scale
Pinnaspis buxi



nigra scale
Parasaisseta nigra



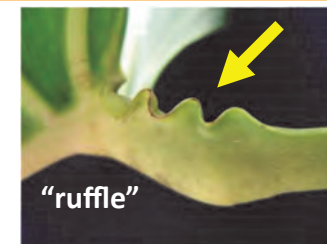
green garden looper
Chrysodeixis eriosoma



stinging nettle caterpillar
Darna pallivitta

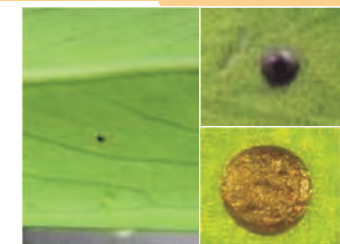


MONSTERA



Where to look:

- top and underside of leaves
- "ruffle" near top of leaf stem



Saprophytic fungus
Sphaerobolus stellatus

egg laying pattern of **spiraling whitefly**
Aleurodicus dispersus



OTHER FLOWERS



cotton aphid on hibiscus
Aphis gossypii



a mealybug on protea
Delottococcus confusus



avocado scale on protea
Fiorinia fioriniae

JUST ONE WORKER ANT... Many ants are attracted to honey-dew producing insects (scales, mealybugs, aphids).



longlegged ant
Anoplolepis gracilipes



bigheaded ant
Pheidole megacephala



tiny yellow house ant
Tapinoma melanocephalum



whitefooted ant
Technomyrmex spp



little fire ant
Wasmannia auropunctata