



Southern House Mosquito

Michael W. DuPonte¹ and Linda Burnham Larish²

¹CTAHR Department of Human Nutrition, Food and Animal Sciences, ²Hawaii Department of Health

Culex quinquefasciatus Say

Origin

Entered Hawaii at the port of Lahaina, Maui, between 1826 and 1830.

Range

Found on all of the major Hawaiian Islands.
Prefers to breed in dirty water and ranges from sea level to about 2000 ft elevation.

Public health concern

Bites people at night; a potential vector of West Nile virus, Japanese B-type encephalitis, and filariasis.

Livestock concern

This mosquito is a vector of heartworm in dogs, fowl pox in chickens, avian malaria in native Hawaiian birds, equine encephalitis in horses, and West Nile virus in horses and birds.

Hosts

Takes blood meals from man, birds, and animals in order to complete its life cycle.

Description

Adult less than $\frac{3}{16}$ inch long.
Adults are brown with narrow cross bands on the abdomen; they have no white bands on the legs and their abdomen is blunt at the tip.
Larvae are recognized by their long breathing tubes and whip-like tail movements when disturbed.

Life cycle

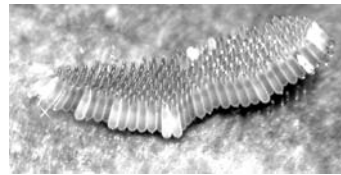
Growth stages: egg, larvae, and pupal stages in the water; adult stage flies.
Up to 400 eggs laid in rafts that float on the surface.
Eggs hatch in 1–2 days; the larval and pupal stages take 8–10 days to complete.
Adults live from two weeks to two months.



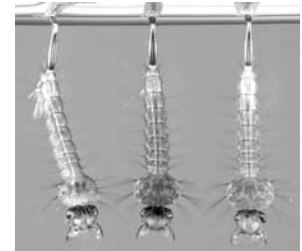
Female



Male



Egg mass



Larvae in water

Control

Eliminate or empty containers where mosquitoes breed.
Change water in troughs and water dishes regularly.
In permanent water sites, apply a product containing *Bacillus thuringiensis israelensis* to control mosquito breeding.
Protect your animals against mosquito borne diseases by administering treatments prescribed by a veterinarian.

References

- Hardy, D. Elmo. 1981. Insects of Hawaii, v. 10 Diptera: Nematocera-Brachycera. Univ. Hawaii Press, Honolulu. pp. 18–19, 90–91.
- Williams, Ralph E., et al. (eds.). 1985. Livestock entomology. John Wiley & Sons. pp. 293, 301–302.
- Hawaii Dept. of Health. 1991. Vector control training manual; mosquitoes.
- U.S. Centers for Disease Control. West Nile virus—entomology. www.cdc.gov/ncidod/dvbid/westnile/mosquitoSpecies.htm.
- Photos from www.arbovirus.health.nsw.gov.au, Dept. of Medical Entomology, New South Wales Dept. of Health, used with permission.